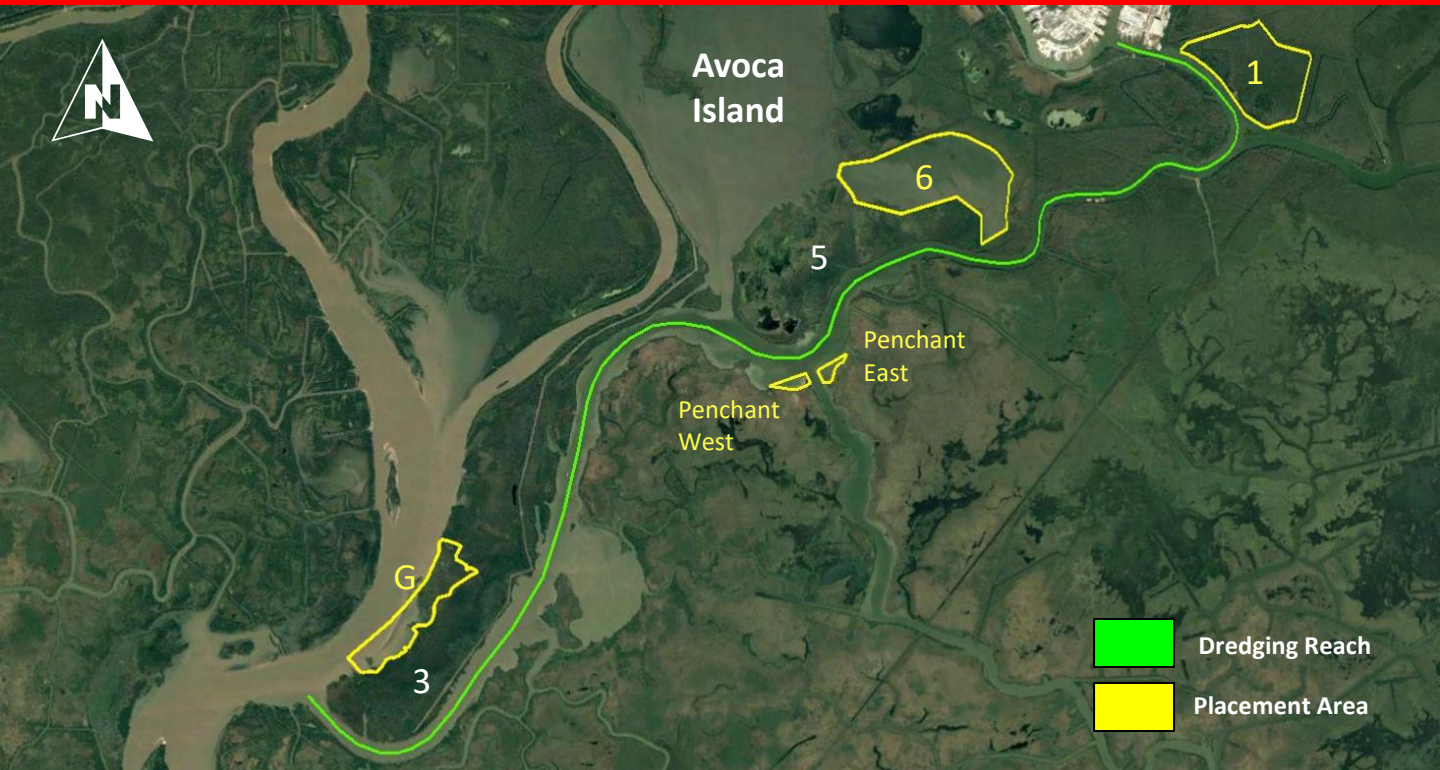


ATCHAFALAYA RIVER AND BAYOUS CHENE, BOEUF AND BLACK, LA



Dredging Reach
 Placement Area

FY 2022 MAINTENANCE DREDGING

PROJECT: Atchafalaya River Bayou Chene, Boeuf and Black, LA
OPERATIONS MANAGER: Tim Connell
PHONE: (504) 862-2360
LOCAL SPONSOR: U.S. Government
COASTAL ZONE CONSISTENCY: C20220034

DESCRIPTION OF WORK:

Maintain a 20' deep x 400' wide channel in Bayou Chene from US HWY 90 crossing over Bayou Boeuf to its junction with the Lower Atchafalaya River.

HISTORICAL DREDGING FREQUENCY: Annual

LAST DREDGED: 2010

TYPE OF DREDGE: Cutterhead

ESTIMATED QUANTITY: 1-5 million CY

ESTIMATED COST: \$3,500,000 – 6,500,000

Depending on available funding

ADVERTISE: TBD

OPEN BIDS: TBD

AWARD: TBD

START WORK: TBD

DURATION: 60 days

DREDGING REACH: Bayou Chene

DISPOSAL AREAS: Avoca Island –wetlands

development: G, 5, 6, Penchant East & West

Upland Disposal Areas: 1, 3

DISPOSAL TYPE: Confined

REMARKS:

Fiscal Year	Contract No.	Disposal Area	Dredging Quantity (CY)	Acres
1996	96-C-0036	E	733,670	8
1998	98-C-0045	Avoca 5	3,827,625	35
		Avoca 5A		40
2003	03-C-0047	Avoca 2	1,122,897	12
		Avoca 5	2,291,504	137
2009	09-C-0099	Avoca 5A	475,458	64
2010	09-C-0099	Avoca 5A	528,123	63